



## Molded Magnet Box Assembly (Upgrade Instructions)

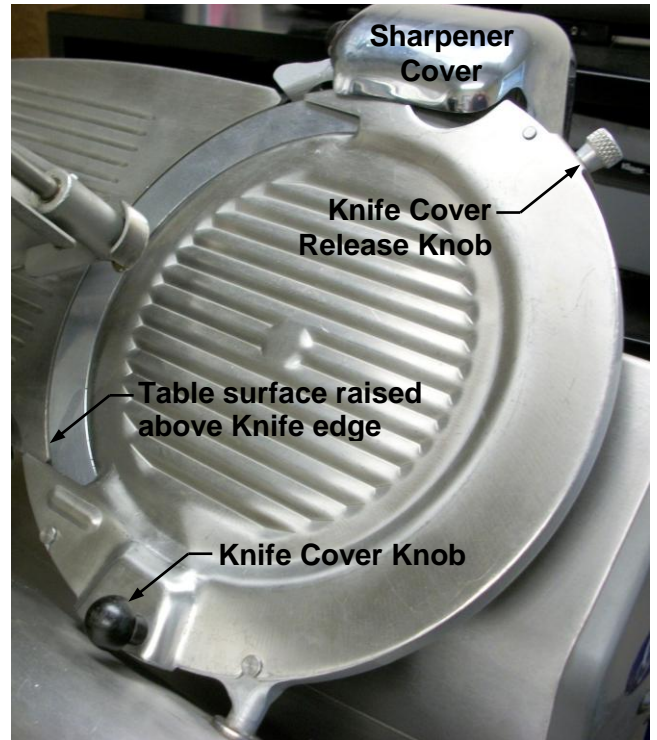
This upgrade makes the Magnet Box easily removable for cleaning each time you clean your slicer.

This sheet provides instructions for installation of the Magnet Box provided with the 140067 Magnet Box Assembly Upgrade Kit.

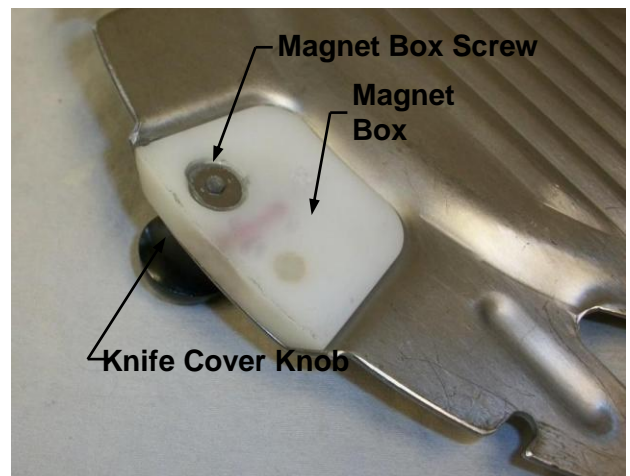
**CAUTION: Knife Blade is sharp! Failure to use caution around Slicer Knife may cause severe injury.**

1. Remove Knife Cover from Slicer.
  - A. Turn table adjustment Knob clockwise until Slicer Table edge is above edge of Knife (Figure 1).
  - B. Raise Sharpener Cover. Pull UP on Knife Cover Release Knob at top of Cover to release the Cover.
  - C. Remove knife cover from slicer.
2. Remove existing Magnet Box from inside of the knife cover (Figure 2).
  - A. Use 5/32 Allen Wrench supplied in kit to remove Magnet Box Mounting Screw. (Pliers may be needed to hold the knob in place while removing the screw.)
  - B. Discard Black Knife Cover Knob, Screw and old Magnet Box.
3. Install Magnet Box Upgrade
  - A. Thoroughly clean and sanitize area where the old Magnet Box was in place.
  - B. Insert threaded portion of new molded magnet box through hole in Cover.
  - C. Install new Knife Cover Knob on Magnet Box Stud.
  - D. Tighten Cover Knob securely by hand. (Do NOT over tighten)
4. Reinstall Knife Cover on Slicer

**IMPORTANT NOTE:** The magnet box should be removed from the cover, cleaned, and sanitized during each cleaning process.



**Figure 1**  
Knife Cover Parts



**Figure 2**  
Remove existing parts