

Parts Catalog



Model G12

SLICING MACHINES

MODELS: G10, G12 & G12A

09-17-09

IMPORTANT!

TO EXPEDITE SHIPMENT OF PARTS, ALWAYS SPECIFY MODEL, REV,
PART NUMBER, AND SERIAL NUMBER OF SLICER.

GLOBE FOOD EQUIPMENT COMPANY

P.O. Box 3209
Dayton, Ohio 45401

Parts Department

Toll Free 1-800-745-6238 • Fax (937) 290-0585

E-Mail: globeinfo@globeslicers.com

Website: www.globeslicers.com

Not for resale

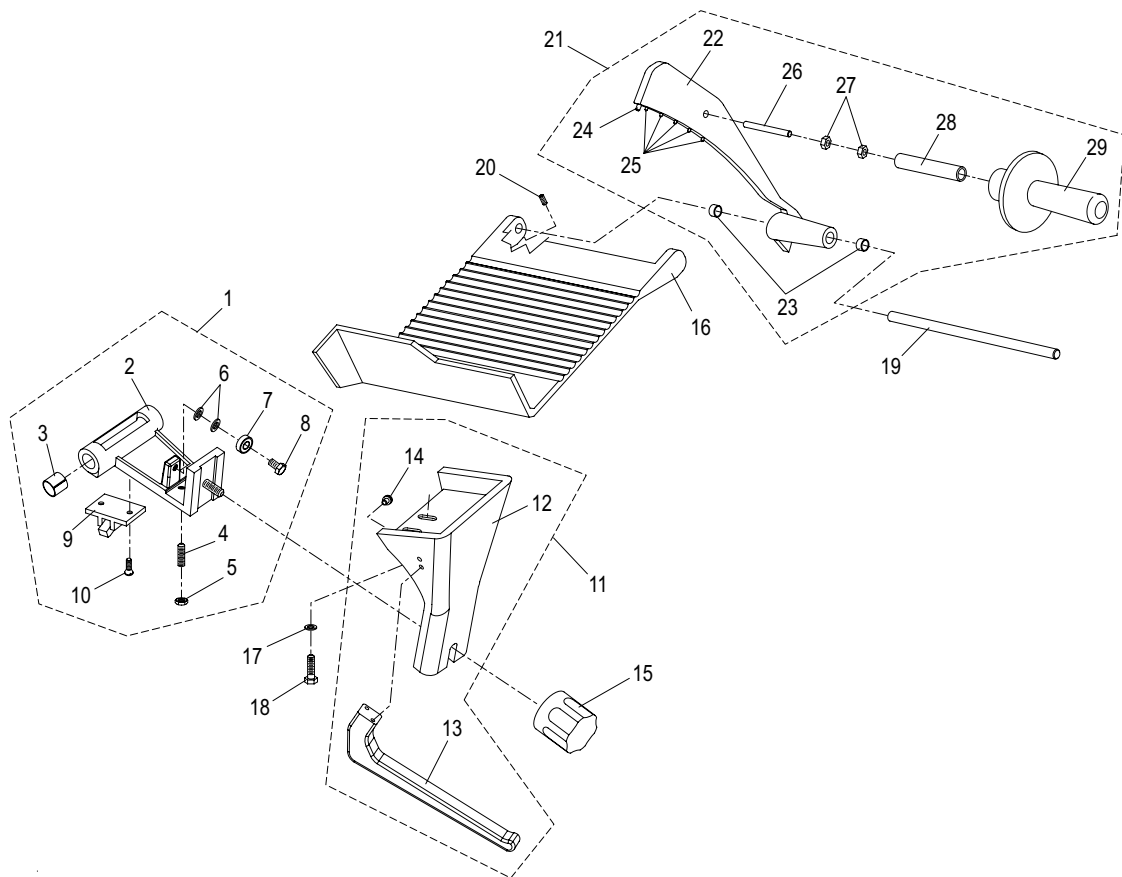
TABLE OF CONTENTS

	<u>PAGE</u>
<u>BASE</u>	<u>1 - 2</u>
<u>CHUTE COMPONENTS</u>	<u>3</u>
<u>ELECTRICAL COMPONENTS</u>	<u>4</u>
<u>AUTO DRIVE COMPONENTS</u>	<u>5 - 6</u>
<u>KNIFE & SHARPENER COMPONENTS</u>	<u>7</u>
<u>SCHEMATICS</u>	<u>8</u>

SLICER BASE PARTS LIST

ITEM	DESCRIPTION	G10 P/N	G12 P/N	G12A P/N	QTY
1	Slicer Base	-	-	-	1
2	Table Adjustment Knob		MCB28		1
3	Wavy Washer		M003		1
4	Table Adjustment Cam		M004		1
*5	Set Screw		M5x10 Dog Pt		2
6	Table Slide Assembly (Item 6-16)		M305		1
7	Table Slide		M005		1
*8	Set Screw		M8x10		2
*9	Stud, threaded		M5x10 TC		1
*10	Set Screw		M4x6 Cup Pt		1
*11	Stud, Threaded		M5x20 TC		1
*12	Nut		5MA		2
*13	Nut		D8MA		2
*14	Flat Washer		D8		2
15	Stud, Cam Actuator		M013		1
16	Rod, Table Slide		M014		1
*17	Screw		M6x20 TE		2
18	Plate, Table Slide		M016		1
*19	Screw		M5x10 TC		2
20	Knife Hub Assembly (Item 21-26)	MC012		M319	1
21	Shaft, Knife Pulley	MCRB12/1		M018	1
22	Knife Pulley	MCR12/2		M019	1
23	Bearing			M020	1
24	Bushing (Spacer)	-		M021	1
*25	Retaining Ring, Internal			47mm DIN 472	1
*26	Retaining Ring, External			20mm DIN 471	1
27	Collar, Knife Hub	MCB61		M025	1
28	Microswitch, Interlock			M026	1
*29	Set Screw, Knife Shaft			M6x13 Cup Pt	2
30	Slide Bar, Round			M059	1
31	Spring, Slide Bar	MCR27		M061	2
32	Screw			M060	2
33	Wear Strip, Square Slide Bar			M063	1
34	Slide Bar, Square			M062	1
*35	Screw			M6x20 TC	2
36	Table Support		M069	M069A	1
*37	Flat Washer			D8	2
*38	Screw			M8x30 TE	2
39	Table	MCB3		M072	1
40	Cover, Hole - Base			M073	1
41	Knife Wiper	MCR22		M097	1
*42	Thumb Screw, Knife Wiper			M5x10 Thumbscrew	2
43	Standoff		M043	-	
44	Cover, Bottom		M113	M119BA	1
45	Foot			M115	4
46	Knife Cover Release Knob			MCR15/2	1
47	Label, Warning			M91022	1
48	Label, Logo			M91021	1
49	Data Plate (Not shown)	-	-	-	1

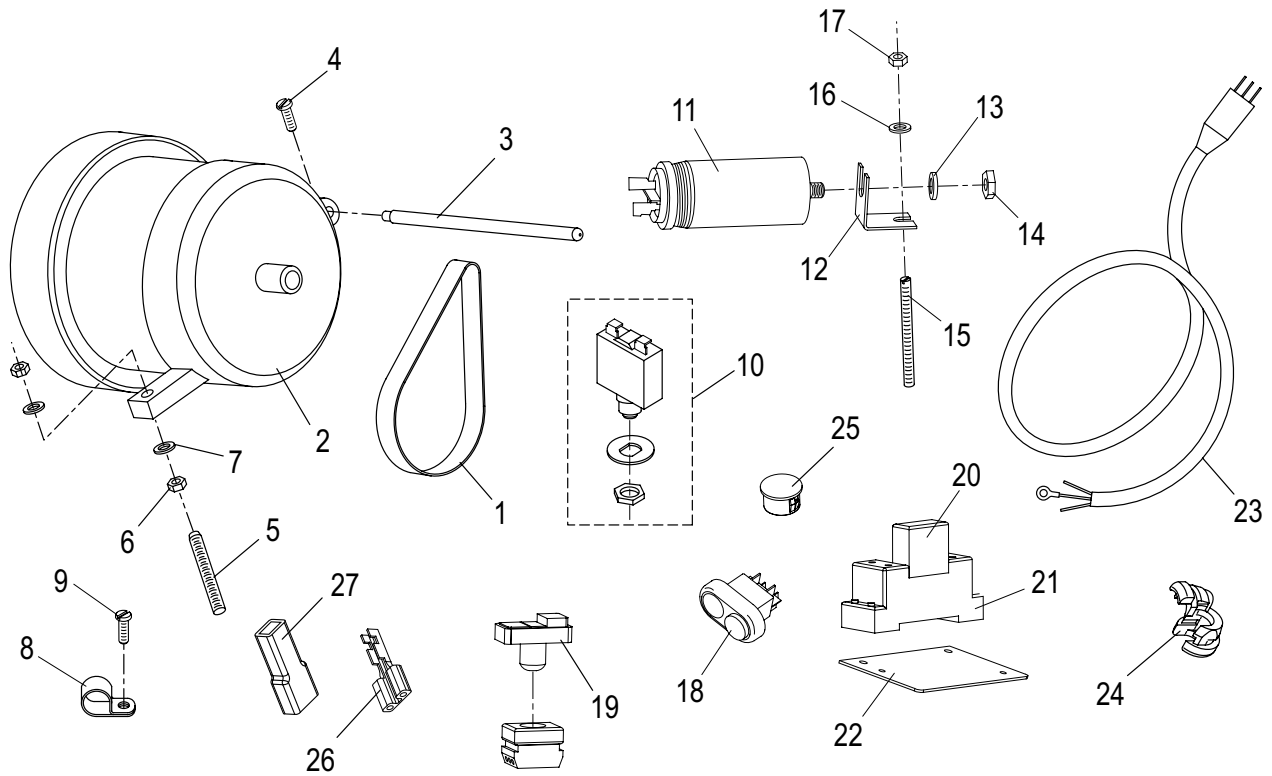
CHUTE COMPONENTS



ITEM	DESCRIPTION	G10 P/N	G12 P/N	G12A P/N	QTY
1	Chute Slide Assembly (Item 2-8)	MC010		MC016	1
2	Chute Slide	-		-	1
3	Bushing, Chute Slide Assembly		M057		2
4	Stud		M053		1
*5	Nut		8MA		1
*6	Flat Washer		D8		2
7	Bearing		M056		1
*8	Screw, Hex Hd		M8x20 TE		1
9	Chute Slide Coupling	-		M143	1
*10	Screw	-		M5x15	2
11	Chute Support Assembly		M066		1
12	Chute Support		M066-1		1
13	Handle, Chute Support		M067		1
*14	Screw, Chute Handle		M6x12 SHCS		2
15	Chute Support Knob		MCB42		1
16	Chute	MCB6USA		M099	1
*17	Flat Washer, Chute Mounting		D8		2
*18	Screw, Chute Mounting		M8x20 Hex Hd		2
19	Rod, End Weight		M102		1
*20	Set Screw, End Weight Rod		M5x6 Cup Pt		1
21	End Weight Assembly (Item 22-28)	MC013	MC014	MC015	1
22	End Weight		-		1
23	Bushing, End Weight		-		2
24	Spacer, End Weight		M108		1
25	Prong, End Weight		-		5
*26	Stud, Endweight Handle		M10x100		1
*27	Nut, Handle Extension		10MA		2
28	Tube, Handle Extension		-		1
29	Handle, End Weight		MCC40/1		1

* Standard hardware

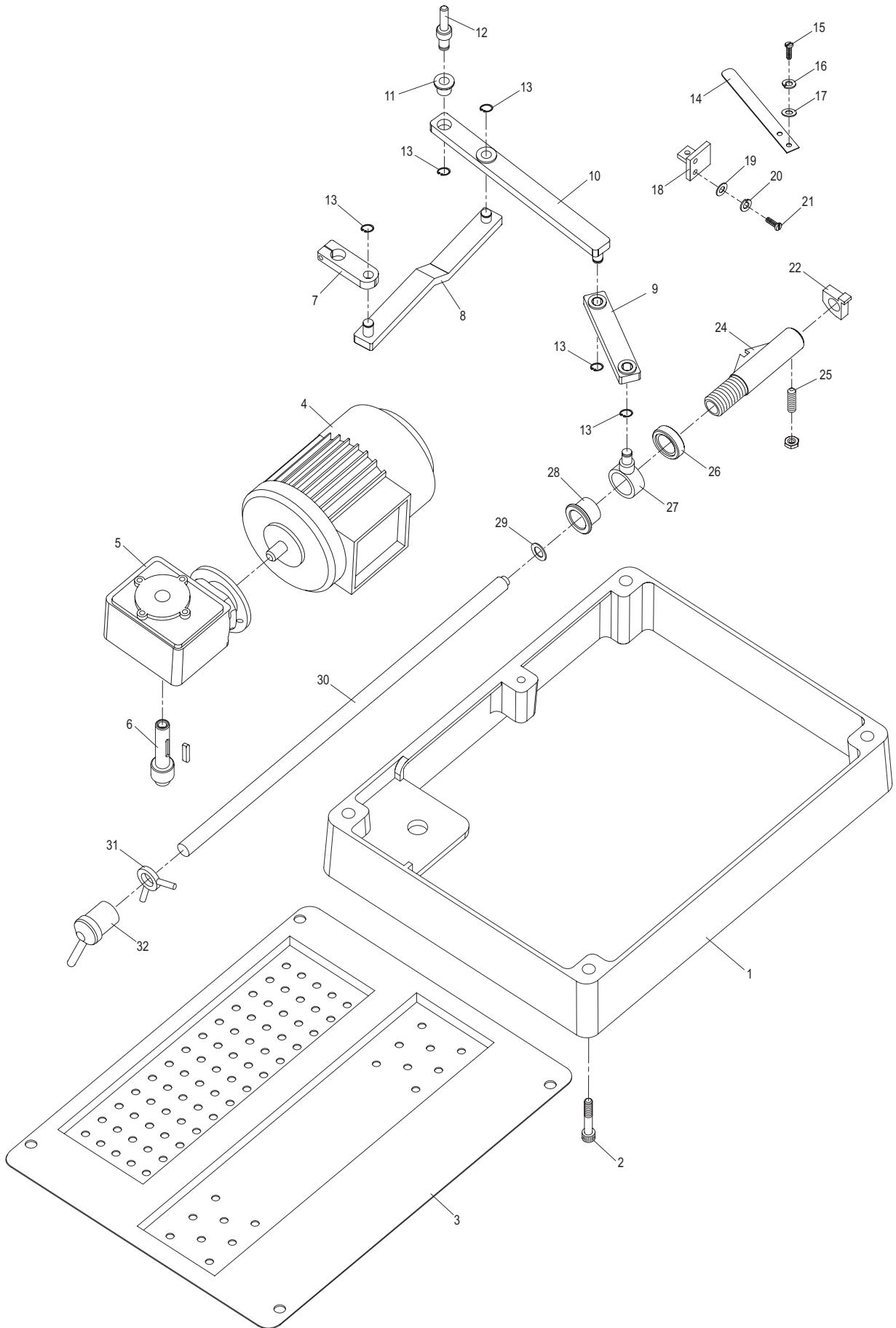
ELECTRICAL COMPONENTS



ITEM	DESCRIPTION	G10 P/N	G12 P/N	G12A P/N	QTY
1	Drive Belt	MCC51		M024	1
2	Knife Motor	MR43/2		M030	1
2A	Motor Seal (Not Shown)			MGI77/5	1
3	Post, Motor Pivot			M031	1
*4	Screw			M4x10 TC	1
*5	Stud			M6x50 TC	1
*6	Nut			M6	2
*7	Flat Washer			D6	2
8	Cable Clamp			M037	1
*9	Screw, Cable Clamp Mounting			M5x10 TC	1
10	Switch, Motor Reset			M038	1
11	Capacitor, 16 μ f			M039	1
12	Bracket, Capacitor Mounting			-	1
*13	Washer			D8	1
*14	Nut			M8	1
*15	Stud			M5 x 60 TC	3
*16	Flat Washer			D5	3
*17	Nut			M5	1
18	Power Switch	MCR69		-	1
19		-		MCB58	
20	Relay	MCR75		MCRS75	1
21	Relay Mount	MCR76		MCRS76	1
22	Plate, Relay Mounting				1
23	Power Cord & Plug			M110	1
24	Strain Relief			M111	1
25	Hole Plug			-	1
*26	Terminal, Female			1/4 FEM QD	8
27	Terminal Insulator			-	8
*28	Screw, Ground (Green, not shown)			M5x8 TE	1

* Standard hardware

AUTO DRIVE COMPONENTS (G12A)

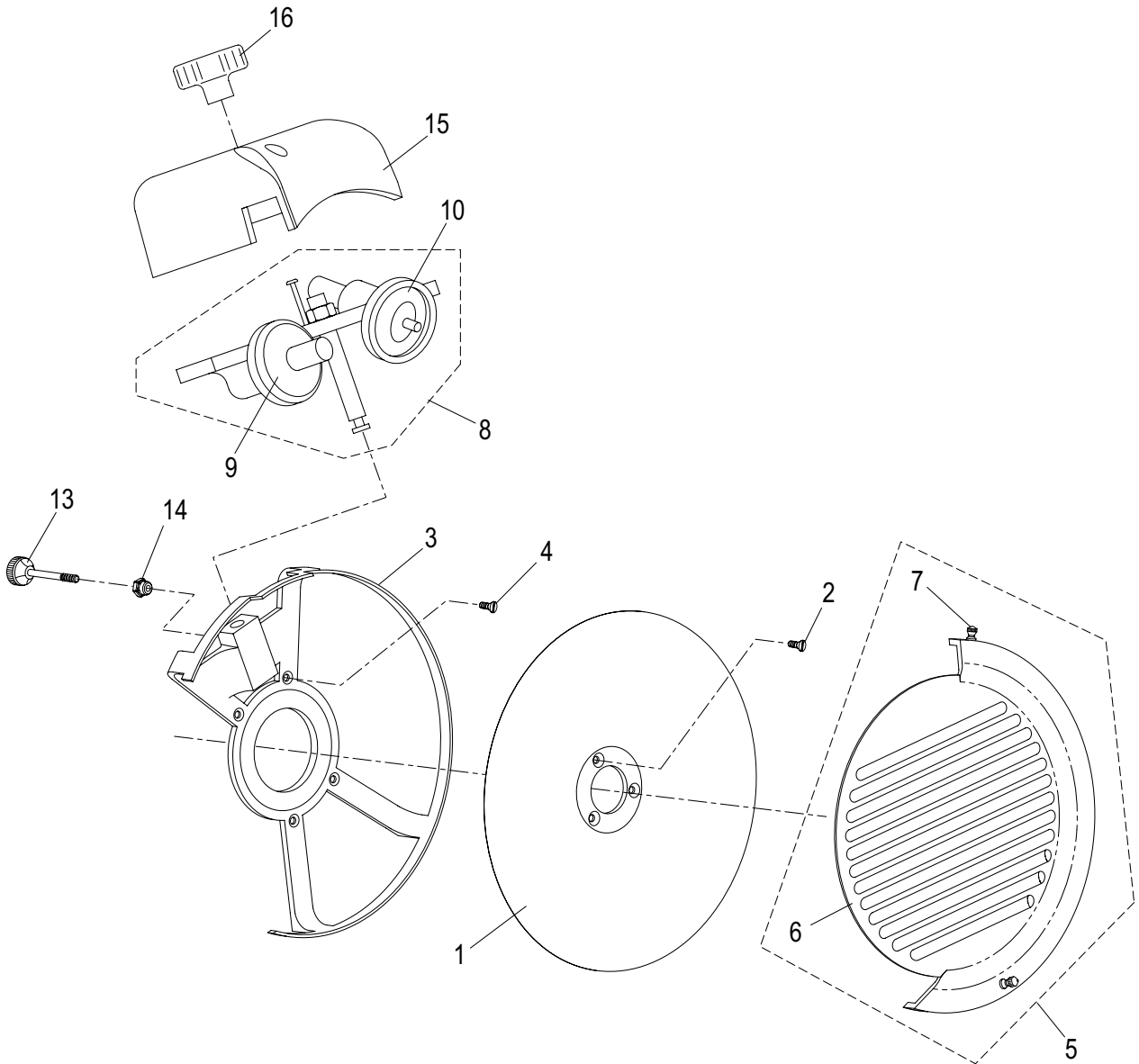


AUTO DRIVE PARTS LIST

ITEM	DESCRIPTION	G12A P/N	QTY
1	Apron	M118BA	1
2	Screw, Apron Mounting	M148	4
3	Bottom Cover	M119BA	1
4	Chute Motor	M120	1
5	Reducing Gear	M121	1
6	Auto Drive Shaft	M129	1
7	Auto Drive Coupling	M130	1
8	Connecting Rod A	M131	1
9	Connecting Rod B	M132	1
10	Connecting Rod C	M133	1
11	Bushing	M137	5
12	Pivot	M144	1
*13	Retaining Ring	9mm DIN 471	5
14	Engagement Spring	M134	1
*15	Flat Washer	D5	2
*16	Lock Washer	M5	2
17	Screw, Engagement Spring Mtg	M017	2
18	Mounting Brkt, Engagement Spring	M135	1
*19	Flat Washer	D5	2
*20	Lock Washer	M5	2
*21	Screw, Engagement Spring Mtg Brkt	M5x15 TC	2
22	Cam	M136	1
*23	Set Screw, Cam	M5x6 Cup Pt	1
24	Tube, Chute Slide	M122	1
25	Stud, Chute Slide	M126	1
26	Nut, Chute Slide (Nylon)	M123	1
27	Ring, Actuator Slide	M124	1
28	Bushing, Chute Slide	M125	1
29	Wavy Washer	M145	1
30	Rod, Chute Slide	M127	1
31	Stop Ring	M147	1
32	Lever, Auto Engage	M128	1

* Standard hardware

KNIFE AND SHARPENER COMPONENTS



ITEM	DESCRIPTION	G10 P/N	G12 P/N	G12A P/N	QTY
1	Knife	MCB13	M047		1
*2	Screw, Flat Hd		M5x14 TSC		3
3	Knife Rim Guard	-	M044		1
*4	Screw, Rim Guard Mounting	-	M4x10 TSC		3
5	Knife Cover Assembly (Items 6 - 7)	MCR4/1	M349		1
6	Knife Cover		-		1
7	Knife Cover Knob		MC003		2
8	Knife Sharpener Assembly		MC017		1
9	Deburring Stone		M092		1
10	Sharpening Stone		MCC17		1
*11	Flat Washer, Stone Mounting (Not Shown)		D6		2
*12	Jam Nut, Stone Mounting (Not Shown)		M6		4
13	Knob, Sharpener Adjustment		M096		1
14	Stud, Knife Ring Guard		M045		1
15	Sharpener Cover		M074		1
16	Knob, Sharpener Cover		M075		1

* Standard hardware

WIRING DIAGRAMS - 115V, 50/60/Hz, 1 PH

